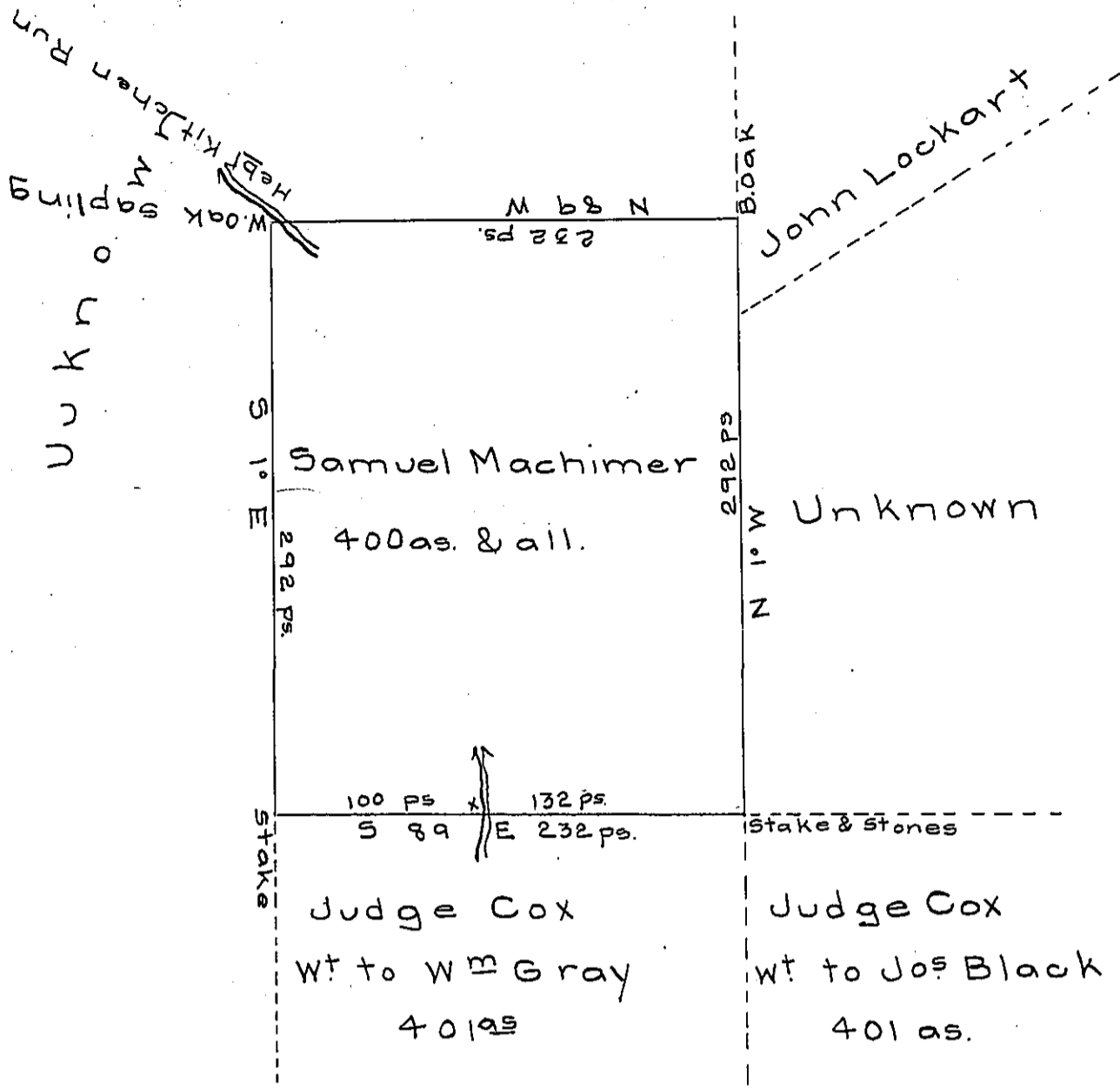


FORM No. 1.



Draft of a tract of land situate in Butler township (East of a place known as Hell Kitchen) Luzerne County containing 400 acres and allowance of six per cent. Surveyed to Samuel Machimer on the eighth day of April one thousand eight hundred and fifty two in pursuance of his warrant dated the seventeenth day of April A.D. 1851.

Ja^s Allabach

Surv^r for Luzerne Co^y

To J. Porter Brawley Esq^r }
Surv^r General

IN TESTIMONY that the above is a copy of the original remaining on file in the Department of Internal Affairs of Pennsylvania, made conformably to an Act of Assembly approved the 16th day of February, 1833, I have hereunto set my Hand and caused the Seal of said Department to be affixed at Harrisburg, this second day of May 1906.

Isaac O. Brown
Secretary of Internal Affairs.